

# St Augustine's Year 9 Options 2023

Parents and Carers Information

Progress Evening

Options Form return deadline

BRAG Event

– Post-16 Providers The Grand (3-7pm)

– Wed 18<sup>th</sup> Jan

– Thu 2<sup>nd</sup> Feb

– Fri 10<sup>th</sup> Feb

- Wed 8<sup>th</sup> Feb



## All young people are now expected to continue in education or training until 18

- stay in full-time education
- start an apprenticeship or traineeship
- work or volunteer (for 20 hours or more a week) whilst in part-time education or training

Students who do not achieve a GCSE grade 9 to 4 in Yr11

Post-16 students must study Maths and/or English as part of their courses.

# Reformed Qualifications

## GCSE (Grades 9-1)

Less or no coursework

Examination at the end of the course (linear)

Longer more complex examinations

More demanding content

## Vocational Subjects (2D\* - P1)

BTEC - H&SC

Cambridge Nationals Sports Studies / iMedia / Engineering Programmable Systems

ASDAN Level 1 – Personal Development Program

Unit based

Coursework style

Shorter exam

<b>Level</b>	<b>Old GCSE Grades</b>	<b>New GCSE Grades</b>	<b>Vocational Grades</b>
<b>Level 2</b>		<b>9</b>	
	<b>A*</b>	<b>8</b>	<b>D2*</b>
	<b>A</b>	<b>7</b>	<b>D2</b>
	<b>B</b>	<b>6</b>	<b>M2</b>
	<b>B/C</b>	<b>5</b>	
	<b>C</b>	<b>4</b>	<b>P2</b>
<b>Level 1</b>	<b>D</b>	<b>3</b>	<b>D1</b>
	<b>E</b>	<b>2</b>	<b>M1</b>
	<b>F/G</b>	<b>1</b>	<b>P1</b>

## All Pupils Will Study

- GCSE Religious Education
- GCSE English Language
- GCSE English Literature
- GCSE Mathematics
- GCSE Science [Double Award]
- Physical Education [2hr/ 2 weeks]

### 1 Lesson per fortnight

Yr 10 – PSHE

Yr 11 – Study Session / PSHE

# EBacc

The EBacc is a set of subjects at GCSE that keeps young people's options open for further study and future careers. DFE

- Government aim for most pupils to study:

**English** (Language and Literature)

**Maths**

**Science** (Combined or Triple)

Humanity – History or Geography

Language – French or Spanish

## Option Subjects: GCSEs (9-1)

Art	French	Physical Education
Computer Science	Geography	Photography
Design Technology	Graphics	Spanish
Drama	History	Triple Science
Food & Nutrition	Music	

## Option Subjects: Vocational (2D\*-P1)

BTEC Health & Social Care  
OCR National iMedia  
OCR National Sports Studies  
OCR National Engineering Programmable Systems

## Option Subjects: ASDAN (L1)

ASDAN Personal Development Program

# Level 1 ASDAN

## Non-Exam

Studied in units

Units tailored to pupils interests

Units could include:

Communication

Workplace

Enterprise

Learning skills

Mrs Day and her team will advise regarding course suitability





Level	Old GCSE Grades	New GCSE Grades	Vocational Grades
Level 2	A*	9	D2*
	A*	8	D2*
	A	7	D2
	B	6	M2
	B/C	5	M2
	C	4	P2
Level 1	D	3	D1
	E	2	M1
	F/G	1	P1

Level	Qualification / educational route				
8	Doctorate (PhD)		NVQ 8		
7	Masters degree (MA)		Degree apprenticeship / NVQ 5, 6, 7		
6	Bachelors degree BA or BSc				
5	Foundation degree FdA or FdSc	Higher National Diploma (HND)			
4			Higher National Certificate (HNC)	Higher apprenticeship / NVQ 4	
3	A levels Grades A-E	International Baccalaureate	T Levels	BTEC diploma BTEC certificate	Advanced apprenticeship / NVQ 3
2	GCSE Grades 4- 9 (C, B, A or A*)			BTEC first diploma	Intermediate apprenticeship / NVQ 2
1	GCSE Grades 1- 3 (D,E,F or G)			Foundation diploma / entry level qualifications	Traineeship / NVQ 1
	Academic route		Vocational route	Applied / work route	

# Apprenticeships

## Apprenticeships

A way to work, earn money and achieve a qualification at the same time, apprenticeships are available to school leavers at intermediate and advanced levels.

- Accrington and Rossendale College – level 2 - 6
- Blackburn College – level 2 - 7
- Burnley College – level 2 - 6
- Craven College – level 2 - 4
- Myerscough College – level 2 - 3
- Nelson and Colne College – level 2 - 6
- North Lancs Training Group – level 2 - 5
- Preston College – level 2 - 7
- Runshaw College – level 2 - 4
- Training 2000 – level 2 - 7

# Apprenticeships

# Myerscough College

## Land Based Service Engineering

### Level 2

Minimum of 4 GCSE grades 2/3 including both Maths and English.

### Level 3

Minimum of 4 GCSE grades 4+ including both Maths and English.



Myerscough  
College

INSPIRING EXCELLENCE

# Apprenticeships

## Nelson & Colne College Health & Social Care

### Level 2

At least 3 GCSEs at Grade 4 or above including English Language and/or mathematics.

### Level 3

Minimum of 4 GCSE grades 4+ including both Maths and English.



# vocational

## Vocational

These specialist work-related qualifications combine subject and theory content with practical learning. They are ideal if you are interested in a particular industry but are not sure what job you would like to do.

- Accrington and Rossendale College
- Blackburn College
- Burnley College
- Cardinal Newman
- Myerscough College
- Nelson and Colne College
- Runshaw College



# Burnley College Business

## Level 1

Two GCSEs at grade 3 or above including English

## Level 3

Five GCSEs at grade 3 or above



# Accrington & Rossendale College

## Law, Justice & Protective Services

### Level 1

At least 2 GCSEs at Grade 3 or above including English Language or Maths.

### Level 2

At least 3 GCSEs at Grade 4 or above including English Language and/or Maths.

### Level 3

At least 5 GCSEs at Grade 5 or above in a range of subjects, preferably including English Language, Maths and Science.





# T Levels

## T-Levels

Equivalent to 3 A Levels. A practical and knowledge-based learning route at college in addition to on-the-job experience through an industry placement of at least 315 hours (approximately 45 days).

- Blackburn College
- Burnley College
- Cardinal Newman College
- Myerscough College
- Nelson and Colne College
- Preston College
- Runshaw College

# T Levels

## Cardinal Newman Digital Cyber Security

## Health

At least two 5s and three 4s at GCSE including at least a 4 in English Language and Maths.

At least two 5s and three 4s at GCSE, including at least 5s in English Language, Maths and Science.



# T Levels

# Runshaw College

## Digital

### (Transition Level 2)

A minimum of 4 Grade 3s and you **must** have Grade 4 in either Maths or English.

## Civil Engineering

GCSE Science and Maths at Grade 5, English and two other GCSEs at Grade 4.



# A Levels

## A-Levels

Study for A-levels at sixth form or college. You usually study three subjects or more.

- Accrington Academy Sixth Form
- Accrington and Rossendale College
- Blackburn College
- BRGS Sixth Form
- Burnley College
- Cardinal Newman College
- CRGS Sixth Form
- Craven College
- Nelson and Colne College
- Preston College
- QEGS Sixth Form
- Runshaw College
- St. Christopher's Sixth Form
- St. Wilfrids Sixth
- Stonyhurst
- Westholme Sixth Form



# A Levels

## Clitheroe Grammar General Entry Requirements

Minimum of 4 GCSEs at grade 6 with at least GCSE grade 4 in English Language and Maths.

### Computer Science

GCSE Maths Grade 6



What you study at sixth form or college can affect your options at university and your future career. Use Informed Choices to help you understand which subjects open up different degrees, particularly at Russell Group universities.

I don't know what  
degree I would like  
to study

I know what  
degree I want to  
study





Accountancy	Actuarial Science	Aeronautical Engineering	American Studies	Anthropology	Applied maths/statistics	Archaeology	Architecture	Art and design	Biochemistry	Biology	Biomedical Sciences
Business Studies	Chemical Engineering	Chemistry	Childhood Studies	Chinese languages	Civil engineering	Classical Studies	Computer Science	Dentistry	Drama	Economics	Education / Education Studies
Electrical / Electronic Engineering	Engineering (general)	English	Environmental Science / Studies	European Studies	Finance	Food and nutrition studies/science	French	Geography	Geology/Earth Sciences	German	History
History of Art	Italian	Japanese	Law	Linguistics	Management Studies	Marketing	Materials Science	Mathematics	Mechanical Engineering	Media Studies	Medicine
Music	Nursing and Midwifery	Occupational Therapy	Optometry	Orthoptics	Pharmacology	Philosophy	Physics	Physiotherapy	Planning	Politics	Portuguese
Psychology	Religious studies / Theology	Russian	Social policy	Sociology	Spanish	Speech Therapy	Sports Science / Physical Education	Veterinary Science			

**Browsing the options may give some inspiration!**

Psychology	Engineering	Natural	Yield	Yield	Finance	Yield	Education	Education	Science
------------	-------------	---------	-------	-------	---------	-------	-----------	-----------	---------

# Orthoptics

The study of Orthoptics covers how the vision system works, how eyes work together and how the nervous system and physiology relate to vision.

**Two of the following subjects are usually essential**

Biology

Chemistry

Further  
Mathematics

Mathematics

Physics



# Business Studies

There are usually no essential subjects, however the following might be helpful.

Accounting

Business

Economics

English  
Language

Government  
& Politics

Mathematics

Sociology

This degree course can be theoretical, covering economics, politics and sociology, or more focused on the skills and practices of business – such as accounting, finance, marketing, logistics and human resources.

Some universities may require GCSE maths at grade 7 or 6

# Triple Science Biology, Chemistry, Physics

Recommended for pupils who have a keen interest in Science and are working consistently towards a Target Grade of 5 or above

Pupils who may wish to go on to study Science at 'A' or 'AS' level.

Combined Sciences		
10 Lessons		
Bio	Chem	Phy
2 x GCSEs		

Triple Sciences		
5 Lessons	5 Lessons	5 Lessons
Bio	Chem	Phy
3 x Separate GCSE Grades		

# Modern Languages

- French
- Spanish
  
- Higher paper and Foundation paper
- C.V.
- Difficult to pick up Post-16

# Music

Performance is  
30% of the course.

You can be assessed  
through singing instead  
of playing  
an instrument.

You can perform pop or  
classical pieces.

It is strongly recommended that pupils  
continue instrumental tuition and practise.





## Art, Craft & Design

Drawing  
Painting  
3D Sculpture  
Printmaking  
Textiles  
Photography  
Mixed Media / Collage

## Graphic Communication

Drawing  
Communication Graphics  
Print Making  
Illustration  
Package Design  
Typography  
Multi-media  
Advertising & Branding  
Signage  
Photography

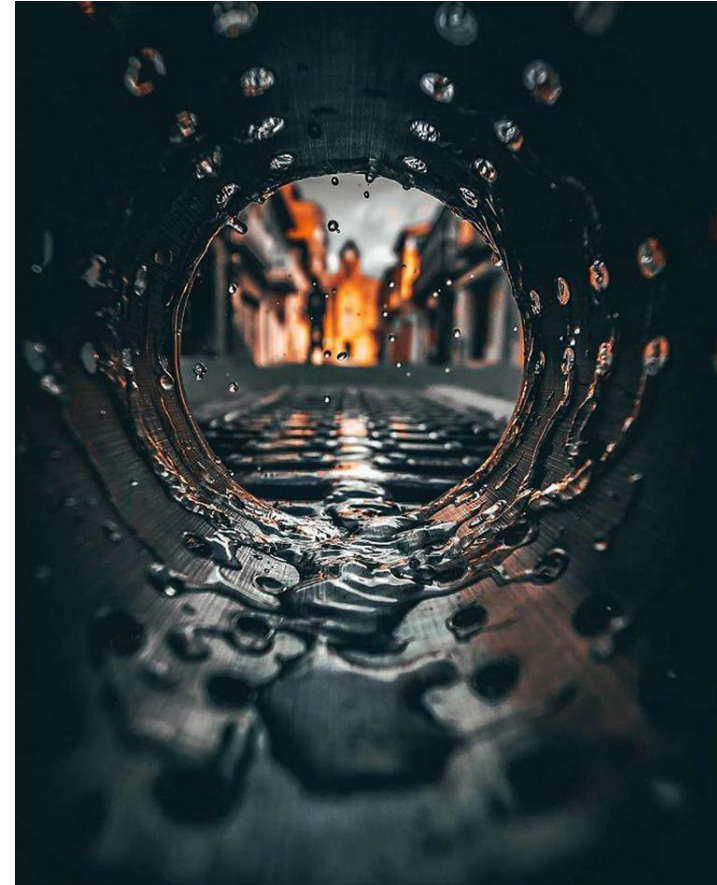


Pupils cannot choose both options

# Photography



Portraiture  
Location  
Studio  
Imagery  
Installation  
Documentary  
Photo-journalism  
Film  
Animation  
Fashion  
Landscape



Narrow curriculum caution and coursework demands



# GCSE PE

60% Exam



Paper 1:  
Fitness and Body Systems  
Paper 2:  
Health and Performance

Most suitable for pupils who take part in 3 sports (both individual and teams based) either competitively or on a regular basis

# OCR Sports Studies



40% Exam

Contemporary Issues in Sport  
Performance and Leadership  
(2 Sports)  
Sport and the Media



Pupils cannot choose both options

```
class BigFile:
    def __init__(self, datadir, ndims):
        idfile = os.path.join(datadir, "id.txt")
        self.names = [x.strip() for x in str.split(open(idfile).read()) if x.strip()]
        self.name2index = dict(zip(self.names, range(len(self.names))))
        self.ndims = ndims
        self.featurefile = os.path.join(datadir, "feature.bin")
        print "[BigFile] %d features, %d dimensions" % (len(self.names), self.ndims)
        print "      binary: %s" % self.featurefile
        print "      txt: %s" % idfile

    def read(self, requested, isname=True):
        if isname:
            index_name_array = [(self.name2index[x], x) for x in requested if x in self.names]
            index_name_array = sorted(index_name_array, key=lambda x: x[0])
            index_name_array = [(x[1], x[0]) for x in index_name_array]
```

# OCR National iMedia

## **Compulsory Units**

Pre-production Skills – 40% Exam  
Digital Graphics

## **Optional Project Units**

Digital Video  
Multimedia

## GCSE Computer Science

- System Architecture
- Programming
- Cyber Security
- Networks
- Data eg Binary System
- Algorithms

Most suitable for pupils with good logical reasoning and advanced maths skills



Narrow curriculum caution



# GCSE Design & Technology

Design Technology elements combined to create one new GCSE:

- papers and boards
- timber
- metals
- polymers
- textiles
- electronic & mechanical systems

'Design Brief' at the end of Year 10  
e.g. a contemporary home or a high profile event



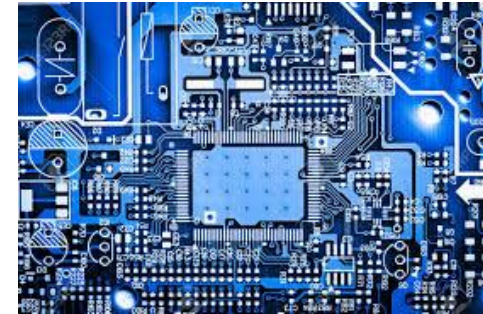
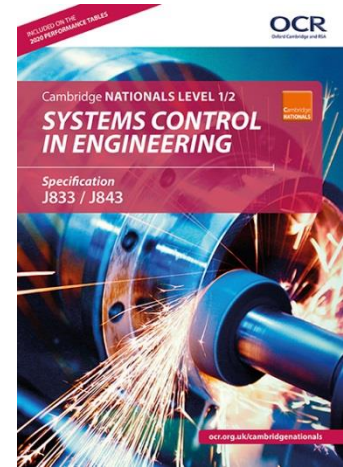
Narrow curriculum caution

# OCR Engineering Programmable Systems

Understand the fundamentals of electronic circuits and be able to design, construct and test a range of electronic circuits.

Units:

Electronic Principles – 40% Exam  
Making and Testing Electronic Systems  
Developing Programmable Systems



Narrow curriculum caution

## GCSE History

The GCSE History course ranges from 1000AD to present day. It looks at events such as the Battle of Hastings through to the collapse of the Soviet Union's control over Eastern Europe in the 1990s

It is a fascinating course which looks at some of the major events that shaped our countries

history. It considers some of the controversial events of the last 1000 years of British and world history.



"Fellow citizens, we cannot escape history". Abraham Lincoln

"History is strewn thick with evidence that a truth is not hard to kill, but a lie, well told, is immortal". Mark Twain

"Never forget the importance of history. To know nothing of what happened before you to look your place on earth, is to remain a child for ever and ever". Unknown

## How will I be assessed?

### Paper 1 – 30%

- Crime & Punishment: 1000AD to present.
- Historical Environment: Whitechapel 1870-1900, including Jack the Ripper.

- British Depth Study: Anglo-Saxon and Norman England.



### Paper 2 – 40%

- Period Study: Superpower relations and the Cold War.

### Paper 3—30%

- Modern Depth Study: Weimar and Nazi Germany.



## Post-16 Opportunities

People who study History follow very varied career paths such as:

Archaeology, Teaching, Law, Politics, Journalism, TV & Radio, Archivists, Advertising, Cultural Resources

Management, Business Management, Information Management, Historic Preservation, Writers & Editors, Corporate Historians.



## OCR Cambridge National in Creative iMedia Level 1/2



The OCR Cambridge Nationals are vocationally-related qualifications that take an engaging, practical and inspiring approach to learning and assessment. They are industry-relevant, geared to key sector requirements and very popular with schools and colleges because

they suit such a broad range of learning styles and abilities.

Pupils will have an opportunity to build upon knowledge and skills demonstrated in Year 9 to present evidence of their ability in digital media, web development and graphics.



Pupils will have an opportunity to build upon knowledge and skills demonstrated across KS3 to present evidence of their ability in basic business ICT, digital media and web development.

## How will I be assessed?

Assessment is based on one external test and three units internally assessed then externally reviewed.

At the end of the course, you will be awarded with one of the following:

- Pass/Merit/Distinction/Distinction \* at Level 2
- Pass /Merit/Distinction at Level 1
- Unclassified



## Post-16 Opportunities

**Diplomas/Principal Learning**  
Engineering Levels 1,2 & 3  
**Apprenticeships Framework**  
Levels 2 & 3  
**Cambridge Nationals**  
in IT Levels 2 & 3

**GCE**  
Electronics, ICT, Applied ICT, Computing-level 3  
Engineering, ICT, Computing, Manufacturing-level 1/2

**Vocational Qualifications**  
Creative iMedia, IT Practitioner—level 1 & 2  
Employment within the ICT sector and related industries.

# Please Talk to Your Teachers and Curriculum Leaders

## Who can tell me more?

GCSE Art, Craft & Design	Mrs Bowden, Mrs Jones, Mrs Pope
GCSE Computer Science	Mr Burton
GCSE Design & Technology	Mr Heyworth/Mr Hodgson
GCSE Drama	Mr Williams
OCR Nats Engineering Programmable Systems	Mr Hodgson
GCSE Food & Nutrition	Mrs Robb
GCSE Geography	All Geography teachers
GCSE Graphic Communication	Mrs Bowden, Mrs Jones
BTEC Health & Social Care	Ms Sharp
GCSE History	All History teachers

## Options Form 2023 - Electronic MS Form

Name:

Form:

<b>A</b> <i>Choose 1 subject</i>	<b>B</b> <i>Choose 2 subjects</i>
GCSE Computer Science	*GCSE Art
GCSE French	GCSE Computer Science
GCSE Geography	GCSE Design & Technology
GCSE History	GCSE Drama
Cambridge Nationals Creative iMedia	Cambridge Nationals Engineering Programmable Systems
GCSE Triple Science	GCSE Food & Nutrition
GCSE Spanish	GCSE Geography
**ASDAN Personal Development Programme	*GCSE Graphics
	BTEC Health & Social Care
	GCSE History
	Cambridge Nationals Creative iMedia
	GCSE Music
	GCSE Photography
	*GCSE Physical Education
	GCSE Triple Science
	*Cambridge Nationals Sports Studies
	**Learning Support
<b>1<sup>st</sup> Choice:</b>	<b>1<sup>st</sup> Choice:</b>
	<b>2<sup>nd</sup> Choice:</b>
<b>Reserve Choice from A or B:</b>	

**Notes**

Pupils should choose 1 subject from column A and 2 subjects from column B, together with a reserve subject from column A or B.

\*Owing to the overlap in subject content, pupils cannot study both GCSE Art and GCSE Graphics. Similarly pupils will not be able to study GCSE PE as well as the Cambridge Nationals in Sports Studies course.

\*\*Learning Support/ASDAN PDP can only be chosen in special circumstances, if recommended by Mrs Day.

We cannot guarantee to run the same courses each year.

The final options offered depend on staffing and on the interests of the year group.

Once option groups are finalised the choice between subjects is greatly reduced.

I will be available to offer advice during Year 9 Progress Evening or can be contacted through email or the school office.

Completed option forms should be submitted online by Friday 10<sup>th</sup> February. A link will be posted by email.



